

Nothing Sews Like A Bernina. Nothing.

**BERNINA®**

## 800DL

*A simple,  
easy and  
affordable  
serger . . .  
with room  
to grow.*

In just one pass, you can cut, sew and finish edges on everything from fine silks and satin to denim, fleece and stretchy fabrics with the greatest of ease. And, although the 800DL is an entry-level machine, you can sew like a pro with versatile features that make serging fast and simple.

Sewing with one or two needles, the machine's 2, 3 and 4 thread overlock capabilities and adjustable tension ensure exactly the finish you want. As for ease, the lower looper threader simplifies threading by doing most of the work for you. A differential feed keeps seams smooth and flat. The built-in rolled hem feature is yours at the flick of a switch. And optional accessories let you add new capabilities as you go. It's top performance at a beginner price.



### Key Features

*Below are just a few of the great features you'll find on the 800DL. Stop by your local BERNINA Dealer for a complete demonstration of everything this machine has to offer.*

### Performance



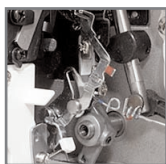
#### 2, 3 and 4 Thread Overlocking

Using one or two needles, you can get exactly the stitch you want by taking advantage of 2, 3 or 4 thread overlocking.



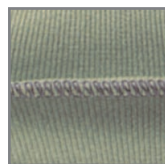
#### Smooth Operation

Talk about a smooth operator, this overlocker cuts, sews and finishes your fabric edges—all in one pass.



#### Self-threading Lower Looper

The 800DL's lower looper is so easy, it practically threads itself—all you have to do is sew.



#### Superb Stitch Quality

Regardless of the fabric being sewn or the application, every stitch will be placed and completed with professional precision.

## Versatility



### 2-thread Stitches

The two-thread stitches are perfect for sewing narrow seams and delicate rolled hems.



### 3-thread Stitches

Make short work of seaming knits, finishing edges and completing decorative rolled hems using the secure three-thread stitches.



### 4-thread Stitches

When your project calls for sturdy construction, seaming woven fabrics or using special techniques like gathering or applying elastic, the four-thread stitches are just what you need.

## Easy to Use



### Simplified Threading

With the Bernette 800DL's lay-in tension slots, just lay the thread into the open slots and follow the color-coded guides for fast, easy threading.



### Adjustable Tension

Getting precisely the right tension is as easy as adjusting the convenient and clearly marked sliding levers.



### Easy Rolled Hem

At a flick of the lever, you can easily convert from overlock to a rolled hem and back again without changing the stitch plate or foot.

## Helpful Tools



### Standard Presser Foot

To simplify cutting and seaming, this versatile presser foot is marked for needle position and cutting line.

## Technical Specifications

### Features

Serger Quality

Stitch Variations

Rolled Hem

### Benefits

- Provides excellent stitch quality for all types of fabrics.
- 13 different stitch variations.
- Two thread overlock, roll hem and flatlocking for added versatility are possible with the standard two-thread adapter.
- This serger will operate with one or two needles for a variety of stitch widths.
- Two or three thread flatlocking using either the left or right needle.
- Three-thread super stretch stitch for seams requiring extra elasticity.
- Built-in rolled hem.
- Just a flick of the lever and simple tension adjustments easily converts the machine from overlock to rolled hem.
- Two and three thread rolled hemming is easily accomplished on the Bernette 800DL for beautifully finished edges on all types of fabric.

Features	Benefits
Threading	<ul style="list-style-type: none"> <li>• Automatic lower looper threader for easy threading.</li> <li>• All thread guides are open! Simply lay the thread in the guides for quick and easy threading.</li> <li>• Threading paths are color-coded for ease in threading.</li> <li>• Built-in threading guide inside the looper cover is a handy reference when threading.</li> <li>• Lift the presser foot and all tensions are released; practical and helpful when threading or pulling threads through the serger.</li> </ul>
Tensions	<ul style="list-style-type: none"> <li>• Numbered tension levers on the face of the machine make tension adjustments quick, easy and accurate.</li> <li>• Infinitely variable tension adjustments can be made from 1-9.</li> <li>• Lift the presser foot and all tensions are released.</li> </ul>
Differential Feed	<ul style="list-style-type: none"> <li>• Located on the right side of the Bernette 800DL for easy access while sewing.</li> <li>• Used for wave-free seams in knit fabrics; wovens cut on the crosswise grain.</li> <li>• Ideal for pucker-free seams in fine fabrics.</li> <li>• Use alone or in tandem with the gathering attachment for gathering fabrics.</li> </ul>
Stitch Length	<ul style="list-style-type: none"> <li>• Adjustment dial is ideally positioned on the right side of the Bernette 800DL for infinitely variable adjustments while sewing.</li> </ul>
Cutting Width	<ul style="list-style-type: none"> <li>• Numbered cutting width dial located under the cloth plate.</li> <li>• Cutting width adjustments from 1mm to 3mm provides the sewer with a variety of stitch widths.</li> </ul>
Seam Guides	<ul style="list-style-type: none"> <li>• Right seam markings are located on the knife guard as a practical aid for an even seams and edges.</li> <li>• Left seam guide is an optional accessory used in guiding hems and cutting wide strips of fabric.</li> <li>• Right seam guide is an optional accessory used for accurate fabric seaming.</li> </ul>
Accessories	<ul style="list-style-type: none"> <li>• Two thread adapter.</li> <li>• Accessories are stored in a convenient zip-top pouch.</li> <li>• Optional accessories: Blindstitch Foot, Elasticator, Cording Foot, Left Seam Guide, Right Seam Guide, Multi-Purpose Foot with Guide (for corded piping and beading), Gathering Attachment, and Standard Foot with Tape Guide.</li> <li>• Attachment Base required for some optional accessories: Right Seam Guide, Gathering Attachment and Guide for Multi-Purpose Foot .</li> </ul>
Light	<ul style="list-style-type: none"> <li>• Built-in light provides added visibility.</li> </ul>
Sewing Speed	<ul style="list-style-type: none"> <li>• For speed and efficiency the Bernina 800DL sews up to 1500 stitches/minute.</li> </ul>
Electronic Foot Control	<ul style="list-style-type: none"> <li>• The electronic foot control gives fine speed control from slow to full speed for intricate sewing. This is very helpful, particularly for beginners.</li> <li>• The electronic foot control provides consistent needle penetration at any speed.</li> </ul>
Suction Feet	<ul style="list-style-type: none"> <li>• The four strong suction feet on the base of this machine provide stability when serging.</li> </ul>
Warranty	<ul style="list-style-type: none"> <li>• 5 years Mechanical.</li> <li>• 1 year electrical.</li> </ul>