

Nothing Sews Like A Bernina. Nothing.

BERNINA®

700D

*A simple,
easy and
affordable
serger . . .
with room
to grow.*

In just one pass, you can cut, sew and finish edges on everything from fine silks and satin to denim, fleece and stretchy fabrics with the greatest of ease. And, although the 700D is an entry-level machine, you can sew like a pro with versatile features that make serging fast and simple.

Sewing with one or two needles, the machine's 3 and 4 thread overlock capabilities and adjustable tension ensure exactly the finish you want.

A differential feed keeps seams smooth and flat. The built-in rolled hem feature is yours at the flick of a switch. And optional accessories let you add new capabilities, including 2 thread stitching as you go. It's top performance at a beginner price.



Key Features

Below are just a few of the great features you'll find on the 700D. Stop by your local BERNINA Dealer for a complete demonstration of everything this machine has to offer.

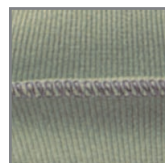
Performance



2, 3 and 4 Thread Overlocking

Using one or two needles, you can get exactly the stitch you want by taking advantage of 2, 3 or 4 thread overlocking.

NOTE: 2 thread serging requires the use of an optional adapter.



Superb Stitch Quality

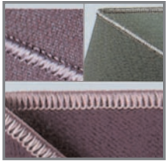
Regardless of the fabric being sewn or the application, every stitch will be placed and completed with professional precision.



Smooth Operation

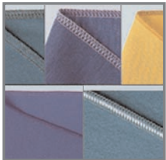
Talk about a smooth operator, this overlocker cuts, sews and finishes your fabric edges – all in one pass.

Versatility



2-thread Stitch (Optional)

Add two-thread stitching with the optional 2 thread adapter – perfect for sewing narrow seams and delicate rolled hems.



3-thread Stitch

Make short work of seaming knits, finishing edges and completing decorative rolled hems using the secure three-thread stitch.



4-thread Stitch

When your project calls for sturdy construction, seaming woven fabrics or using special techniques like gathering or applying elastic, the four-thread stitch is just what you need.

Easy to Use



Simplified Threading

With the BERNINA 700D's lay-in tension slots, you just lay the thread into the open thread guides for fast, easy threading.



Adjustable Tension

Getting precisely the right tension is as easy as adjusting the convenient and clearly marked sliding levers.



Easy Stitch Switching

At a flick of the lever, you can easily convert from overlock to a rolled hem and back again without changing the stitch plate or foot.

Helpful Tools



Standard Presser Foot with Tape Guide

To simplify cutting and seaming, the versatile standard presser foot is marked for needle position and cutting line.

Technical Specifications

Features

Serger Quality

Benefits

- Provides excellent stitch quality for all types of fabrics.

Stitch Variations

- 7 different stitch variations; 6 additional variations with the optional two thread adapter.
- Two thread overlock, roll hem and flatlocking for added versatility are possible with the optional two-thread adapter.
- This serger will operate with one or two needles for a variety of stitch widths.
- Two or three thread flatlocking can be done with either the left or right needle.
- Three-thread super stretch stitch for those seams requiring extra elasticity. (Optional 2 thread adapter needed)

Rolled Hem

- Built-in rolled hem.
- Just a flick of the lever and simple tension adjustments easily converts the machine from overlock to rolled hem.
- Three thread rolled hemming is easily accomplished on the BERNINA 700D for beautiful finished edges on all types of fabric.

Features	Benefits
Threading	<ul style="list-style-type: none"> • All thread guides are open! Simply lay the thread in the guides for quick and easy threading. • Threading paths are color coded for ease in threading. • Built-in threading guide inside the looper cover is a handy reference when threading. • Lift the presser foot and all tensions are released; practical and helpful when threading or pulling threads through the serger.
Tensions	<ul style="list-style-type: none"> • Numbered tension levers on the face of the machine make tension adjustments quick, easy and accurate. • Infinitely variable tension adjustments can be made from 1-9. • Lift the presser foot and all tensions are released.
Differential Feed	<ul style="list-style-type: none"> • Located on the left side of the BERNINA 700D for easy access while sewing. • Used for wave-free seams in knit fabrics and wovens cut on the crosswise grain. • Ideal for pucker-free seams in fine fabrics.
Stitch Length	<ul style="list-style-type: none"> • Adjustment slide is positioned on the left side of the BERNINA 700D for infinitely variable adjustments while sewing.
Cutting Width	<ul style="list-style-type: none"> • Numbered cutting width dial located under the cloth plate. • Cutting width adjustments from 1mm to 3mm provides the sewer with a variety of stitch widths.
Seam Guides	<ul style="list-style-type: none"> • Right seam markings are located on the knife guard as a practical aid for an even cut. • Left seam guide is an optional accessory used in guiding hems and cutting wide strips of fabric. • Right seam guide is an optional accessory used for accurate fabric seaming.
Optional	<ul style="list-style-type: none"> • Two thread adapter. • Optional accessories: Blind Stitch Foot, Elasticator, Cording Foot, Built-in Tape Feeding Foot, Left Seam Guide, Attachment Base and Multi-Purpose Foot for corded piping and beading. • Optional accessories used with the attachment base – Piping Guide, Gathering Attachment and Right Seam Guide.
Light	<ul style="list-style-type: none"> • Built in light provides added visibility.
Sewing Speed	<ul style="list-style-type: none"> • For speed and efficiency the BERNINA 700D sews up to 1500 s.p.m.
Electronic Foot Control	<ul style="list-style-type: none"> • The electronic foot control gives fine speed control from slow to full speed for intricate sewing. This is very helpful, particularly for beginners. • The electronic foot control provides consistent needle penetration at any speed.
Suction Feet	<ul style="list-style-type: none"> • The four strong suction feet on the base of this machine provide stability when serging.
Warranty	<ul style="list-style-type: none"> • 5 years Mechanical. • 1 year electrical.