

Nothing Sews Like a Bernina. Nothing.

BERNINA®

009DCC

*The perfect
companion
to your
regular
BERNINA
serger.*

This specialty machine is designed to give you the tools of making ready-to-wear garments. The two stitches it does—the coverstitch and the chain stitch—are staples in the garment industry. Add these to the 2, 3, and 4 thread capabilities of your regular BERNINA® serger, and you're ready to serge any fabric for all types of projects.

The BERNINA® 0009DCC is also great for sewing home dec and craft projects as well as for embellishing with decorative threads. And the best part is—there's no need to convert from regular serging to chain or cover stitching. The 009DCC is always ready to complement your BERNINA® sewing machine and serger.



Key Features

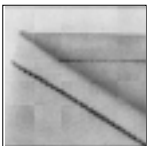
Below are just a few of the great features you'll find on the 0009DCC. Stop by your local BERNINA Dealer for a complete demonstration of everything this machine has to offer.

Perfect Stitching



5mm Cover Stitch

This industry standard stitch is great for hemming knits, sewing elastics, stitching stretchy lace, decorative seams, and binding edges.



Two Thread Chain Stitch

Good for seaming, binding, gathering, and for decorative work on woven fabrics with little or no stretch.

Helpful Tools



Compensating Foot

With its floating "toes" maintaining alignment with uneven fabric layers, the compensating foot ensures a professionally-finished coverstitch every time.

Technical Specifications

Features	Benefits
Serger Quality	<ul style="list-style-type: none">• Excellent stitch quality in all types of fabric.• Easy to use, reliable machine.
Easy Threading	<ul style="list-style-type: none">• Threading paths are color-coded and numbered to simplify the threading process.• Threading guide inside looper cover provides a handy reference.• Looper retracts for ease of threading.
Stitch Variation	<ul style="list-style-type: none">• Select cover or chain stitch for a truly professional finish.• Decorative threads expand your creative stitch options.
Marked Seam Guides	<ul style="list-style-type: none">• Conveniently located markings on looper cover are a practical aid for consistent seam allowances and hems.
Differential Feed	<ul style="list-style-type: none">• Dial located on right side of machine for easy access while sewing.• Used for wave-free seams in knits and wovens cut on the bias.• Ideal for pucker-free seams in fine fabrics.
Cover Stitch Compensating Foot	<ul style="list-style-type: none">• Specially designed presser foot features floating “toes” that help guide the fabric and prevent sideways movement when topstitching ribbing, folded hems, or binding edges.
Presser Foot Pressure	<ul style="list-style-type: none">• Presser foot pressure may be increased or decreased for optimum feed of all fabric weights.
2-Step Presser Foot Lifter	<ul style="list-style-type: none">• Lift and hold the presser foot for additional clearance; useful when stitching bulky fabrics such as polar fleece.
Stitch Length Adjustment	<ul style="list-style-type: none">• Numbered dial provides accurate length adjustments.• Infinitely variable length adjustments from 1-4mm.
Thread Cutter	<ul style="list-style-type: none">• Conveniently located on the left side of the machine, it lets you quickly cut thread tails at the end of the seam.
Light	<ul style="list-style-type: none">• Built-in light illuminates the sewing area for added visibility.
Electronic Foot Control	<ul style="list-style-type: none">• The electronic foot control provides fine speed control from slow to full speed for intricate sewing; especially helpful for beginners.• Provides consistent needle penetration at any speed.
Suction Feet	<ul style="list-style-type: none">• The four strong suction feet on the base of the machine provide stability while stitching.
Warranty	<ul style="list-style-type: none">• 5 yr. mechanical• 1 yr. electrical
Accessories	<ul style="list-style-type: none">• Needle Set, Spool Caps, Tweezers, Cleaning Brush/Needle Inserter, Thread Net, Small Screwdriver, Oiler, Accessory Bag, Dust cover